

No. 1 in Europe
New on offer
HEATER ONE



No. 1 in Europe

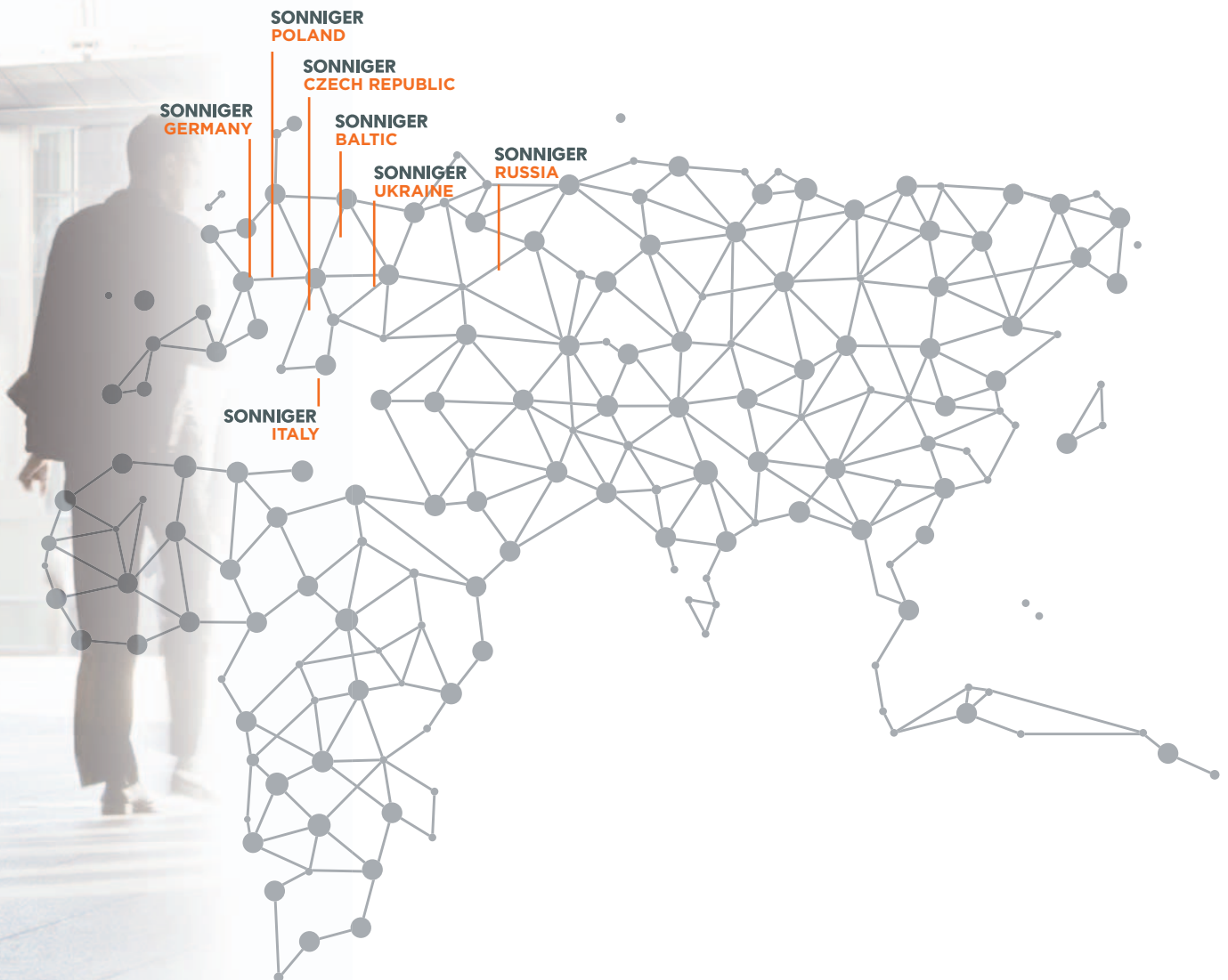
SONNIGER IS AN EUROPEAN PRODUCER OF MODERN, ECO-FRIENDLY AND OPTIMALLY SELECTED UNITS FOR INDUSTRIAL HEATING MARKET. WE ARE A GROUP OF SPECIALISTS IN THE FIELD OF AIR HEATERS AND AIR CURTAINS.



SONNIGER HEATING PARTNERS

Our team consist of committed, competent and dynamic personnel who are ready to meet customer needs. SONNIGER HEATING PARTNERS philosophy is to develop cooperation together in longterm perspective.

Our carefull and proffesional approach guarantees optimal product selection, proper instalation and excellent after-sales service.



COMPETITIVE PRODUCTS SIMPLE CHOICE EXPERIENCE AND KNOWLEDGE STAFF

REFERENCE



WARSAW SPIRE | WARSZAWA



GEMINIPARK | TYCHY



PRODUCTION HALL | TUCHOM



BMW | GLIWICE



ZASADA TRANS SPEDITION | NIEPOŁOMICE



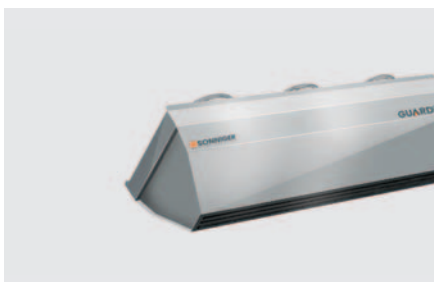
WATER FAN HEATERS
HEATER

6-7



STANDARD AIR CURTAINS
GUARD

8-9



INDUSTRIAL AIR CURTAINS
GUARD PRO

10-11

HEATER WATER FAN HEATERS

Water fan **HEATER** are line of modern and reliable devices designed to heat high cubature buildings.

ADVANTAGES

- Modern design
 - 3 color stripes included
- High performance parameters:
 - air output 4100 m³/h
 - heat output range 5 to 70 kW
- New possibilities: 3 speed fan as standard
- Lifetime warranty on the casing



3 STEP FAN
as standard supply

New leader in the mini segment: **HEATER ONE**

- Compact size
- Optimal parameters
- Lifetime warranty on the casing



AUTOMATIC CONTROL



Panel COMFORT

- Manual temperature regulation
- Speed regulation
- Ventilation in summer season
- Control up to 3 pcs of HEATER



Panel INTELLIGENT

- Weekly thermostat
- Automatic change of fan speed depending on room temperature
- BMS communication



Splitter MULTI 6

- Control up to 6 pcs of HEATER and more

NEW WATER HEATERS

TECHNICAL DATA

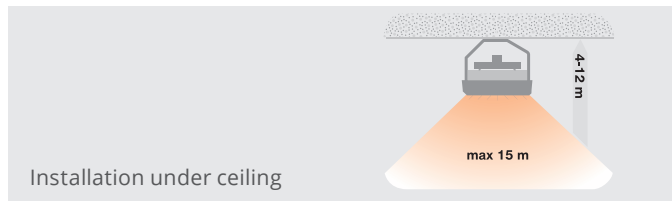
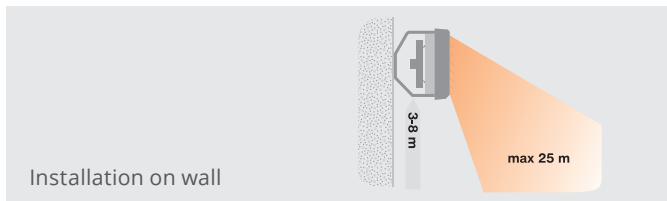
		HEATER ONE	HEATER R1	HEATER R2	HEATER R3	HEATER MIX
heat output range	kW	5-20	10-30	30-50	50-70	-
max air output	m ³ /h	1900	4 100	3 500	3 400	5 600
no of unit rows	-	2	1	2	3	0
air temperature increase*	°C	32	14	29	46	-
max working pressure	MPa	1,6	1,6	1,6	1,6	-
max airflow range	m	14	27	25	24	15 **
diameter of connection nozzles	inches	1/2"	3/4"	3/4"	3/4"	-
power supply	V/Hz A	230/50 0,58 A	230/50 1,15 A	230/50 1,15 A	230/50 1,6 A	230/50 1,6 A
motor Power	kW	0,124	0,25	0,25	0,36	0,36
motor Speed	rpm	1400	1350	1350	1400	1400
protection class IP	-	IP54	IP54	IP54	IP54	IP54
sound level	dB (A)***	54	59	59	60	60
weight without water/ with water	kg	9,6 / 10,6	10,8 / 11,9	12,7 / 14,8	14,5 / 16,9	9,2

* for water 90/70 and inlet air temperature for 0 °C

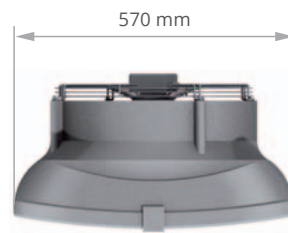
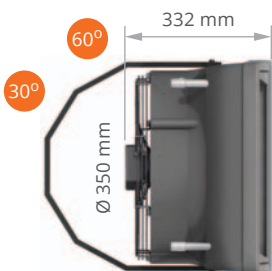
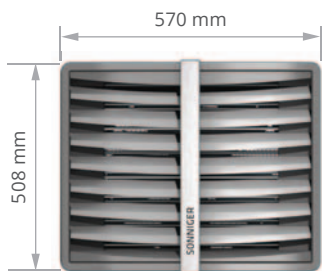
** max installation height for horizontal installation, working area max 380 m²

*** measured in distance of 5m

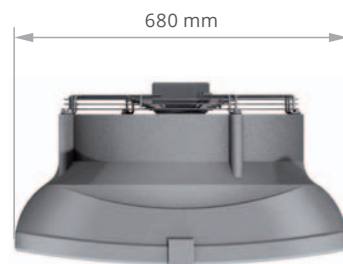
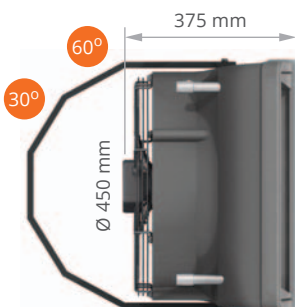
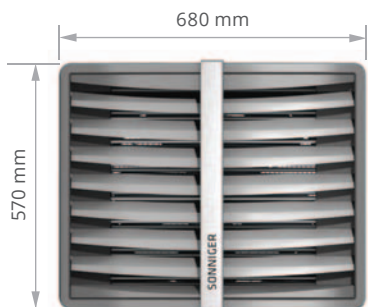
INSTALLATION TYPES



HEATER ONE



HEATER R1, R2, R3, MIX



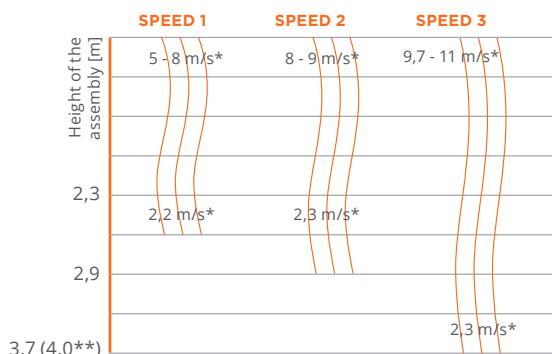
The new **GUARD** comes with modern design, high performance parameters and full range of accessories. GUARD is synonymous to modernity, superior and advanced technology



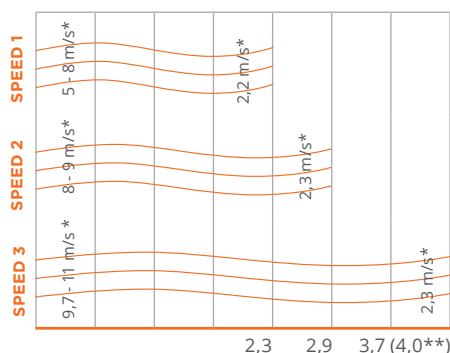
ADVANTAGES

- Modern design
- High performance parameters, air output 4800 m³/h, air throw up to 4 m
- PTC electric heaters technology
- Low noise level, reduced weight

HORIZONTAL AIR FLOW RANGE (max installation height)



VERTICAL AIR FLOW RANGE (max range by vertical installation)



* air flow speed ** ambient air curtain

AUTOMATIC CONTROL



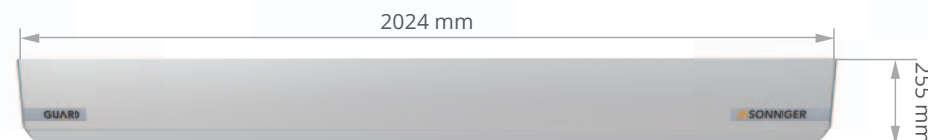
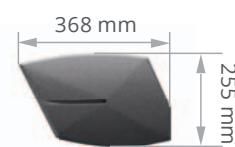
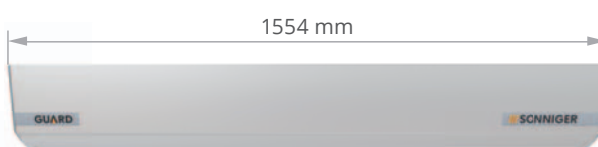
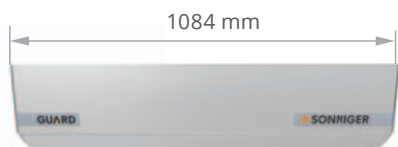
- Panel COMFORT**
- Manual temperature regulation
 - Fan speed change
 - Control up to 2 pcs of GUARD air curtains



- MAGNETIC doorswitch**
- Allows to activate/deactivate air curtain depending on opening of entrance doors



- BMS**
- Delivery of basic signals to Building Management System)



TECHNICAL DATA		AIR CURTAIN WITH WATER HEATER			AIR CURTAIN WITH ELECTRIC HEATER			AIR CURTAIN WITHOUT HEATER		
		GUARD 100W	GUARD 150W	GUARD 200W	GUARD 100E	GUARD 150E	GUARD 200E	GUARD 100C	GUARD 150C	GUARD 200C
length of unit	m	1	1.5	2	1	1.5	2	1	1.5	2
max installation height	m	4	4	4	4	4	4	4	4	4
max air output	m³/h	2000	3600	4800	2000	3600	4800	2100	3700	5000
heat output *	kW	10-16	20-29	25-40	4 - 7	6,5 - 11	8,5 - 14	-	-	-
max working pressure	MPa	1,6	1,6	1,6	-	-	-	-	-	-
diameter of connection nozzles	inches	1/2"	1/2"	1/2"	-	-	-	-	-	-
power supply	V/Hz A	230/50 1,95	230/50 2,6	230/50 2,6	230/50 1,95	230/50 2,6	230/50 2,6	230/50 1,95	230/50 2,6	230/50 2,6
motor power	W	220	320	320	220	320	320	220	320	320
power consumption	V/Hz A	-	-	-	400/50 11	400/50 16,6	400/50 22,4	-	-	-
weight	kg	16,5	20,5	28	17	21,5	29	15	18,5	25
noise level	dB (A)	59	61	62	59	61	62	60	61	62
protection class IP	-	IP21	IP21	IP21	IP21	IP21	IP21	IP21	IP21	IP21

* heat output range for parameters of water 90/70°C and temperature of inlet air +10°C

GUARD 100W

AIR CURTAIN air flow - 2000 m³/h

inlet/outlet water temperature		water 60/40 °C					water 70/50 °C					water 90/70 °C				
inlet air temperature	°C	0	5	10	15	20	0	5	10	15	20	0	5	10	15	20
heat output	kW	9	7,9	6,9	5,8	4,8	11,3	10,3	9,2	8,1	7,1	16	14,9	13,9	12,8	11,7
outlet air temperature	°C	14,9	18,3	21,8	25,2	28,7	18,4	21,8	25,2	28,7	32,1	25,4	28,8	32,2	35,6	39
water flow	m³/h	0,4	0,3	0,3	0,2	0,2	0,5	0,4	0,4	0,3	0,3	0,7	0,6	0,6	0,5	0,5
pressure drop	kPa	2	2	1	1	1	4	3	2	2	1	7	6	5	5	4

GUARD 150W

AIR CURTAIN air flow - 3600 m³/h

inlet/outlet water temperature		water 60/40 °C					water 70/50 °C					water 90/70 °C				
inlet air temperature	°C	0	5	10	15	20	0	5	10	15	20	0	5	10	15	20
heat output	kW	17,4	15,6	13,8	12,1	10,3	21,3	19,5	17,7	15,9	14,1	29,0	27,2	25,4	23,6	21,8
outlet air temperature	°C	15,1	18,6	22,1	25,7	29,2	18,3	21,8	25,3	28,9	32,4	24,7	28,2	31,7	35,2	38,7
water flow	m³/h	0,6	0,6	0,5	0,4	0,3	0,8	0,7	0,7	0,6	0,5	1,2	1,1	1	0,9	0,8
pressure drop	kPa	8	6	4	3	2	12	10	8	6	5	22	19	17	14	12

GUARD 200W

AIR CURTAIN air flow - 4800 m³/h

inlet/outlet water temperature		water 60/40 °C					water 70/50 °C					water 90/70 °C				
inlet air temperature	°C	0	5	10	15	20	0	5	10	15	20	0	5	10	15	20
heat output	kW	24,7	22,3	19,9	17,5	15,1	29,8	27,4	25,0	22,6	20,2	40,0	37,6	35,2	32,8	30,4
outlet air temperature	°C	15,7	19,2	22,7	26,2	29,7	18,9	22,4	25,9	29,4	32,9	25,2	28,7	32,2	35,7	39,2
water flow	m³/h	0,9	0,8	0,7	0,6	0,5	1,1	1	0,9	0,8	0,7	1,6	1,5	1,4	1,3	1,2
pressure drop	kPa	15	12	9	7	5	22	19	15	12	9	42	37	32	27	23

GUARD 100E, 150E, 200E

AIR CURTAINS

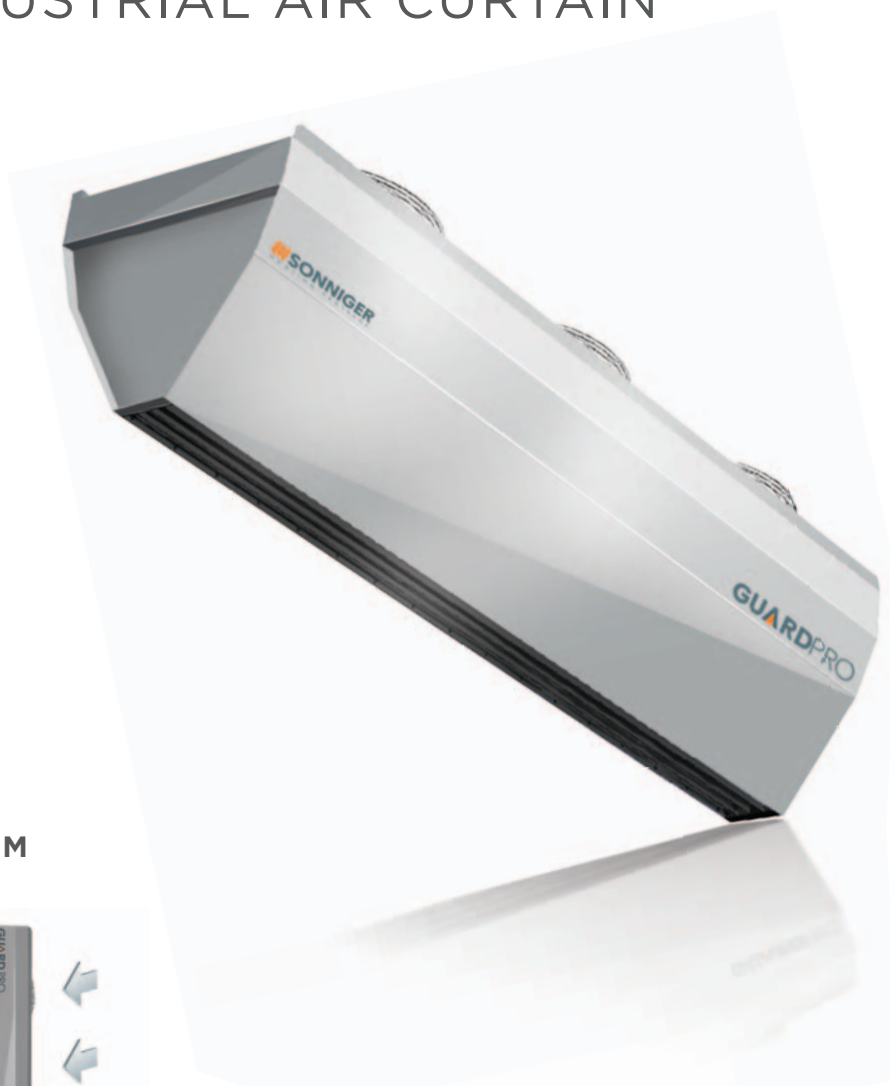
TECHNICAL DATA		GUARD 100E					GUARD 150E					GUARD 200E				
inlet air temperature	°C	0	5	10	15	20	0	5	10	15	20	0	5	10	15	20
outlet air temperature	°C	12	17	22	27	32	13	18	23	28	33	14	19	24	29	34

GUARDPRO INDUSTRIAL AIR CURTAIN

GUARDPRO is a line of industrial air curtains designed for protection of industrial buildings from the loss of heat energy through gateway. Air flow range up to 7,5 m thanks to high efficiency fans and modular construction.

ADVANTAGES

- Air throw up to 7,5m
- Modular system based on length of air curtains 1,5m and 2m
- Vertical or horizontal assembly
- ACTIVE PROTECTION System



ACTIVE PROTECTION SYSTEM



ACTIVE PROTECTION system improves effectivity of air bareer which protects entrance doors.

ACTIVE PROTECTION SYSTEM helps to save energy supplied for heating of air curtains. Main principle is to install GUARDPRO with water heater at the bottom and GUARDPRO without a coil at the top. Hot air leaving bottom curtain will move into upper side and will create temperature comfort for users. In this case only bottom curtain is supplied with heating medium, it gives substantial savings on operating costs.

AUTOMATIC CONTROL



Doorstop

- Starts operation of curtain when door opens



SPEEDER

- Air exhaust regulation



CONTROLBOX

- Complete electrical connection box

INDUSTRIAL AIR CURTAIN

TECHNICAL DATA	WATER CURTAINS		ELECTRIC CURTAINS		COLD CURTAINS		
	GUARD PRO 150W	GUARD PRO 200W	GUARD PRO 150E	GUARD PRO 200E	GUARD PRO 150C	GUARD PRO 200C	
	length of unit	m	1.5	2	1.5	2	1.5
max air flow range	m	7,5	7,5	7,5	7,5	7,5	7,5
heat output*	kW	33	47	14	21	-	-
max air output	m³/h	6 500	9 000	6 700	9 100	6 800	9 200
max working pressure	MPa	1,6	1,6	-	-	-	-
diameter of connection nozzles	inches	3/4"	3/4"	-	-	-	-
power supply	V/Hz A	230/50 2,4	230/50 3,6	230/50 2,4	230/50 3,6	230/50 2,4	230/50 3,6
motor power	kW	0,5	0,75	0,5	0,75	0,5	0,75
power consumption	V/Hz A	-	-	400/50 17	400/50 29	-	-
weight filled with water / without water	kg	46/44	62/60	45	63	37	51
protection class IP	-	IP 54	IP 54	IP 54	IP 54	IP 54	IP 54

* for water parameters 90/70°C, inlet air temperature 0°C

GUARD PRO 150W

air flow - 6500 m³/h

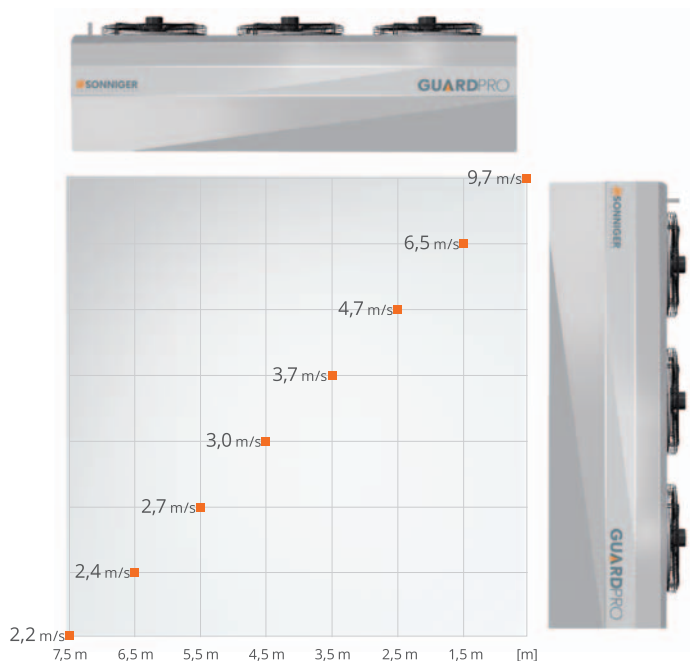
inlet/outlet water temperature	water 60/40 °C					water 70/50 °C					water 90/70 °C					
inlet air temperature	°C	0	5	10	15	20	0	5	10	15	20	0	5	10	15	20
heat output	kW	19,1	17,0	14,9	12,8	10,7	23,9	21,5	19,2	17,0	14,7	33,0	30,8	28,5	26,2	23,9
outlet air temperature	°C	8,8	12,7	16,7	20,6	24,5	10,5	14,5	18,6	22,6	26,5	14,3	18,2	22,2	26,2	30,2
water flow	m³/h	0,7	0,7	0,7	0,4	0,4	1,1	0,7	0,7	0,7	0,7	1,4	0,7	0,7	0,7	0,7
pressure drop	kPa	2,4	1,8	1,3	0,9	0,5	3,7	3,1	2,5	2,0	1,5	6,7	5,9	5,2	4,4	3,8

GUARD PRO 200W

air flow- 9000 m³/h

inlet/outlet water temperature	water 60/40 °C					water 70/50 °C					water 90/70 °C					
inlet air temperature	°C	0	5	10	15	20	0	5	10	15	20	0	5	10	15	20
heat output	kW	29,1	25,5	22,1	18,9	15,8	35,1	31,8	28,6	25,4	22,3	47,0	43,4	39,9	36,5	33,2
outlet air temperature	°C	8,7	12,7	16,6	20,6	24,6	10,4	14,4	18,4	22,4	26,4	14,1	18,1	22,1	26,1	30,1
water flow	m³/h	1,1	1,1	0,7	0,7	0,7	1,4	0,7	0,7	0,7	0,4	1,8	1,8	1,4	1,4	1,4
pressure drop	kPa	5,6	4,4	6,1	2,5	1,7	8,5	7,1	5,8	4,7	3,7	15,0	13,0	12,0	9,9	8,5

SPEED OF AIR FLOW



AIR CURTAIN **GUARD** no.1 in Europe

INSPIRED BY AEROSPACE TECHNOLOGY



ADVANTAGES

- Modern design
- High performance parameters, air output 4800 m³/h, air throw up to 4 m
- PTC electric heaters technology
- Low noise level, reduced weight